

## Comparing Energy Options

Estimate annual or monthly loads and costs associated with air conditioning, heating, and on-site power generation with *Building Energy Analyzer™*. Compare the performance of standard and high efficiency electric chillers, variable speed electric chillers, absorption chillers, engine chillers, thermal storage, on-site generators, heat recovery, or desiccant systems.

## Use to Estimate Energy Loads and Costs

Estimate annual or monthly loads and costs associated with air-conditioning, heating, power generation, thermal storage and heat recovery systems for a given building and location with *Building Energy Analyzer™*. Develop a better understanding of what new building heating, cooling, and power technology can mean for your clients. Prepare side-by-side economic comparisons of different energy options and equipment life cycle cost

analysis, perfect for client presentations.

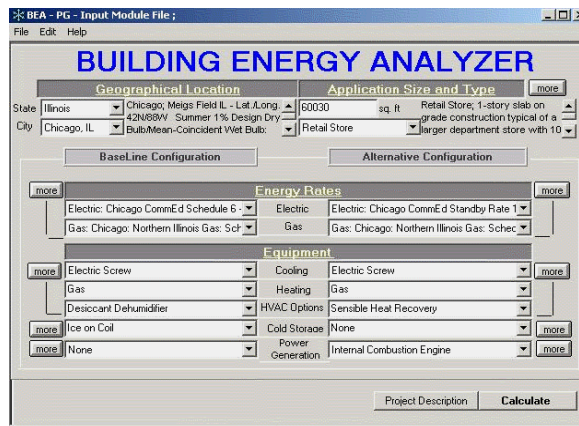
### Features

Quick economic analysis for

- Cooling
- Heating
- Thermal Storage
- Power Generation
- Cogeneration
- Templates for 15 typical buildings
- Handles complex utility rates
- Life Cycle Cost Analysis
- Weather files for 233 Locations
- User friendly - compatible with Windows® 95/98/2000/XP

### Potential Users

- HVAC Consultants
- HVAC System designers and operators
- Facility managers
- Gas and electric utility marketers
- ESCO engineers and marketers
- Equipment marketers
- Energy marketers

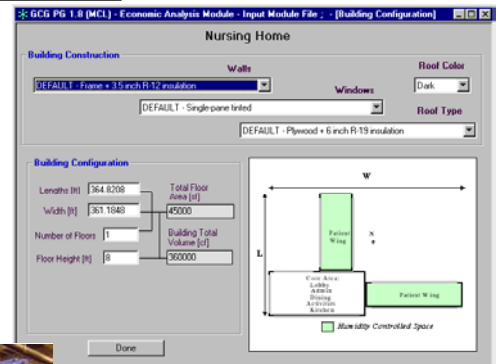


## Use as a Marketing Tool

Easily perform quick-to-use economic analysis for the customer's utility rates, location, and building type. Tailor your analysis to the specifics of the customer's facility.

## Develop Sales Literature

Use the program's typical buildings to prepare marketing literature for local weather condition by building type (schools, retail, etc.) Train new marketing staff on cost saving opportunities for your customers.



## Use to Focus Your Marketing Effort

Test the economic viability of a wide range of different systems. Pick the most attractive application and building type, and develop your marketing focus. Perfect for ESCO marketers.